



COMPANY PROFILE

WE WORK
TO MAKE
ENERGY
**A TAILOR MADE
SOLUTION**



A SIME COMPANY

WWW.GIE.IT



**WE TRANSFORM
ENERGY** FOR
PEOPLE AND
ENVIRONMENT
SAFEGUARD

**AT GI&E, WE DEVELOP PACKAGED
SOLUTIONS FOR RECIPROCATING
COMPRESSORS AND AUXILIARY SKIDS
PROVIDING COMPETITIVE AND FLEXIBLE
CONFIGURATIONS.**

GI&E INDEX

	PAGE
Company overview	04
Fit To Future	05
How we work	06
GI&E numbers	07
A company over history	08
Explore our portfolio	11
Our products	12
Our services	14

COMPANY OVERVIEW


ABOUT US

Thanks to the mix of engineering and manufacturing skills, acquired through decades of work in the energy and oil and gas field, GI&E manages to support the Customer through an industrial model that focuses on technical competence, associated with agility and management flexibility.

At GI&E, our goal is to provide cutting-edge solutions and services in specific gas compression applications with Reciprocating Compressors by covering the standards required by the market, including API618.

OUR VALUES

- COMMITMENT
- PASSION
- EXPERIENCE



**“WE ARE WORKING TO
MAKE ENERGY MORE
INNOVATIVE, FLEXIBLE
AND CLEANER, THANKS TO
COMPETITIVE SOLUTIONS,
AGILITY, EXPERIENCE AND
A STRONG COMMITMENT
TO THE ENVIRONMENT”**

FIT TO FUTURE



Matteo Bertolini

CEO

The mission and vision of Sime group of Companies is to be FIT to FUTURE

GI&E Acquisition is a great opportunity for our group to continue in our mission to be Fit to Future: to grow in providing the right solution to meet all its Customers' needs, fulfilling the fundamental requirements in terms of Quality, Time, Cost and Safety.

Now we can merge the Sime consolidated know how in process engineering, acquired through many experiences with customers around the world, with the GI&E capabilities in providing packaged solutions for Reciprocating Compressors and Auxiliary Skids, thanks to its manufacturing facilities and its long lasting know how in gas compression applications.

Our team values: commitment, passion and experience, along with the richness and the creativity of our engineers have always helped, and will continue to help the Company to be a reliable partner of our Customers, conceiving, proposing and delivering competitive and innovative solutions to fulfill their requirements.

GI&E Fit to Future approach is to support the Customer for the entire process, from process design to after sales service including modification and upgrades. We are committed to do it worldwide through the entire lifecycle of the product.

I am proud that GI&E is starting to be a part of our group and to be a player of our growth and I believe in the Company's capabilities to make the Energy market more efficient, more cleaner and more environmentally sustainable.

GI&E

SIME group of companies



8
SITES

300+
EMPLOYEES

30+
YEARS OF ENGINEERING
EXPERIENCE

HOW WE WORK



At GI&E we improve our work constantly, to give our Customers the **best competitive and innovative solutions**.

We also design tailor made configurations, thanks to the peculiar in-house capabilities and expert team we have built through many years of experience and work around the world.

In order to deliver the best solutions, we focus on:



COMMITMENT

We care about People and the Planet. For this reason, we concentrate all our efforts in creating energy efficiency solutions to preserve the environment



FLEXIBILITY

Our organization and expertise give us the possibility to react quickly to any Customer needs and provide solution in a short period of time.



EXPERTISE

Our Employees are one of the most important keys of our business. We constantly develop soft and hard skills, in order to give our Customers the best team ever.

QUALITY & HSE

At GI&E, we have a daily focus on **Quality, Health, Environment** and **Safety**: **they are more than keyword, they enlighten our path constantly**. We work in the Oil&Gas and Energy field enabling our Customer to succeed. Thanks to our experience, we know that Quality and HSE are the main pillars for these industries and should be part of our life as well.

For this reason, we are working constantly to guarantee high quality standards to our customers.

Currently, we have certified ISO9001 and PED. **But we won't stop.**

We constantly commit to achieve other important Certification in order to offer our customer the best solutions at the best quality standards.



GI&E NUMBERS

At GI&E, we make all the efforts to satisfy the necessities each Country and Customer may have. Our numbers talk by themselves.



4
SITES

50+
EMPLOYEES

800+
VERTICAL
RECIPROCATING
PROCESSORS
INSTALLED AND
OPERATED
WORLDWIDE

A COMPANY OVER HISTORY

1963

Eni, through the subsidiary Nuovo Pignone, builds the Porto Recanati production site used for the production of metal carpentry, like kiosks and canopies, fuel service, and prefabricated buildings for civil use.

1976

The Porto Recanati site becomes part of INSO, a Nuovo Pignone subsidiary in partnership with Snam Progetti and Anic, and the production of prefabricated buildings goes on. The activity is extended in order to build offices, hotels, hospitals and more.

1981

The activity of INSO, and the one of Porto Recanati site, is restructured.

The production is strengthened by adding to the traditional manufacturing processes, metal carpentry and other activities integrated to the normal NP production: Gas Turbines manufacturing and Reciprocating Compressors assembly and packaging.

Since the early 1980 till early 2000 more than 800 vertical reciprocating compressor have been packaged and delivered from the Porto Recanati site.





We provide solutions
worldwide

ED
ROCATING
UXILIARY
MPETITIVE
URATIONS.

2001/2002

Nuovo Pignone sells the Porto Recanati facility to Ghergo Industries and Engineering (GI&E), a local electric plants company that was expanding its business in the Natural Gas sector.

2010/2018

GI&E signs a license agreement with Nuovo Pignone for the production of vertical reciprocating compressors with Nuovo Pignone technology. GI&E develops the "Green Gas" module for CNG application. The compressors packaging is extended to other manufacturers.

From 2002 to 2018 more than 250 Auxiliary Skids have been produced (L.O.C., Gas Cooler Skids, DLN Skids, Water Console) and more than 350 Reciprocating Compressors have been assembled or packaged.

2019

Sime, an engineering company active for more than 30 years in the oil and gas field, acquires the GI&E business unit related to the production and packaging of compressors. GI&E renews the Nuovo Pignone License for the production of vertical reciprocating compressors.

OUR SITES IN ITALY



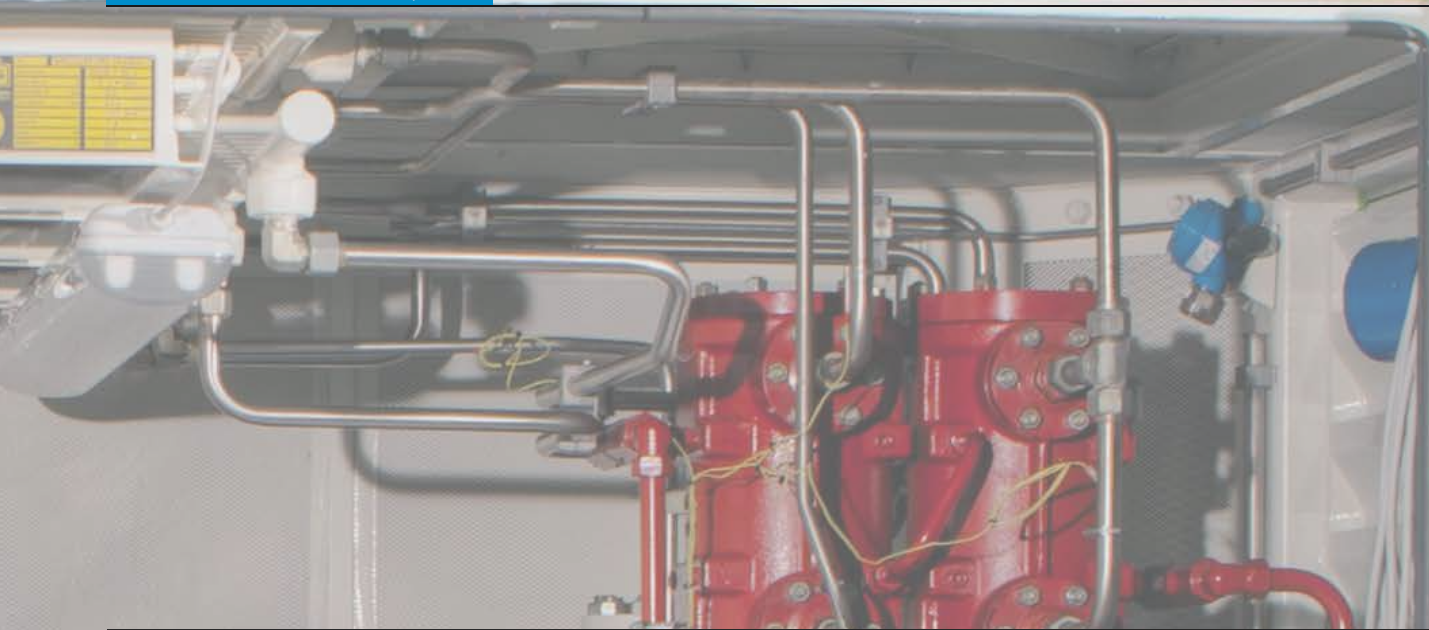
Porto Recanati
**PRODUCTION
SITE**



Milano
**COMMERCIAL
OFFICE**



Firenze & Pistoia
**HEAD QUARTER &
ENGINEERING HUB**



At GI&E we improve our products constantly to give the most reliable and competitive solutions and the best Engineering Services to succeed in the Energy and Oil&Gas field.





EXPLORE OUR PORTFOLIO



OUR PRODUCTS

ONE STOP SHOP

GI&E has more than 40 years of experience and know-how in the production and packaging of Reciprocating Compressor, in order to satisfy Client's Aims.

GI&E manufactures and packages API 618 Vertical Reciprocating Compressors, under Nuovo Pignone License, and packages Reciprocating Compressor according to API 618 and API 11P along with their auxiliary suitable for applications in Oil&Gas market and other Industrial Sectors.

At GI&E it isn't just a matter of compressor and mechanical parts. We focus and concentrate all our effort to satisfy Customer needs through the entire product life-cycle.

For this reason, we constantly improve our After Sales & Spare parts Services to be at Customer side in the shortest time.



RC COMPRESSOR < 1MW

Vertical RC BVTN and AVTN
at your disposal.

The main application fields are:

- | OIL&GAS
- | NATURAL GAS
- | TECHNICAL GAS



RC COMPRESSOR > 1MW

Over 350+ units of various size and around 250 auxiliary skids have been packaged and delivered from Porto Recanati factory in the last 20 years



“
**ONE
STOP
SHOP**
”

OUR SERVICES

PASSION DRIVES ENERGY

At GI&E, thanks to a mix of Engineering and Manufacturing capabilities, we are able to design and customize all our Products in order to satisfy Clients' need.

From design to after sales service, the GI&E team, will be at your disposal with its competences and skills:

Engineering & Project Management

In-House Capabilities:

Fabrication

Test Bench

After Sales Services

Furthermore, thanks to the cooperation with Sime Group, at GI&E we can deliver the best services, to satisfy specific needs, to develop special projects and packaged processes, in compliance with main requirements of each Client and Country.





AFTER SALES

GI&E Product Service Organization commits itself to support the Customer worldwide through the entire lifecycle of the product



IN-HOUSE CAPABILITIES

GI&E offers a wide range of Production Services thanks to specific capabilities available at the Porto Recanati site



ENGINEERING

GI&E is able to provide Engineering Know-How and Compressors' Manufacturing Knowledge to support Clients' needs

G.I.&E Srl

Via Scossicci, 51
62017

Porto Recanati (MC) Italy

+3907197491

info@gie.it

www.gie.com

FOLLOW US ON LINKEDIN

Milano | Commercial Hub

Via Tolstoj 86, H5
20098

S. Giuliano Milanese (Milano)Italy

+39029849951

info@gie.it

Pistoia | Head Quarter

Via Sant'Agostino, 24

51100 Pistoia (PT) Italy

+3905731727014

info@gie.it

Firenze | Engineering Hub

Via Giovanni del Pian de Carpini 96/6 – 96/7

50100

FIRENZE (FI) Italy

+3905731727014

info@gie.it

